

## IMMEDIATE ACTION

# SERVICE



# BULLETIN

NUMBER 151

February 11, 1957

SUBJECT: Elevator Push-Pull Tube Rollers

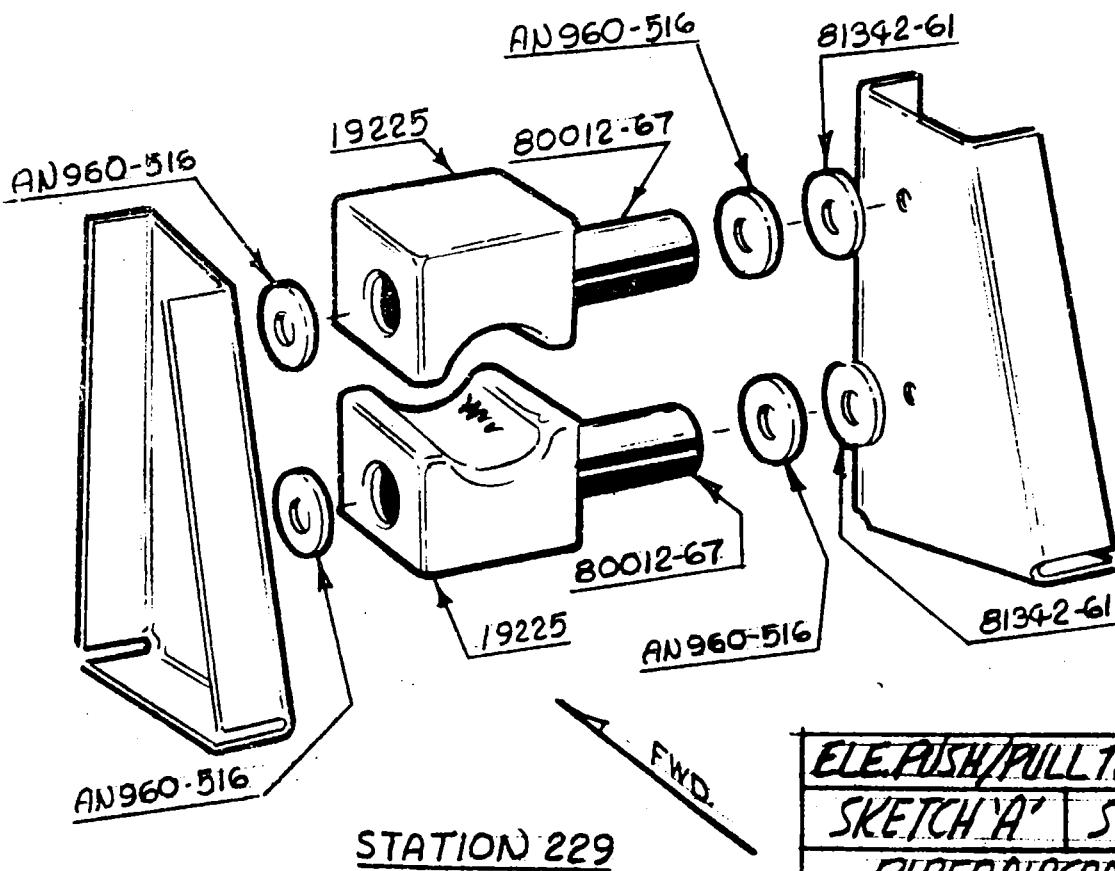
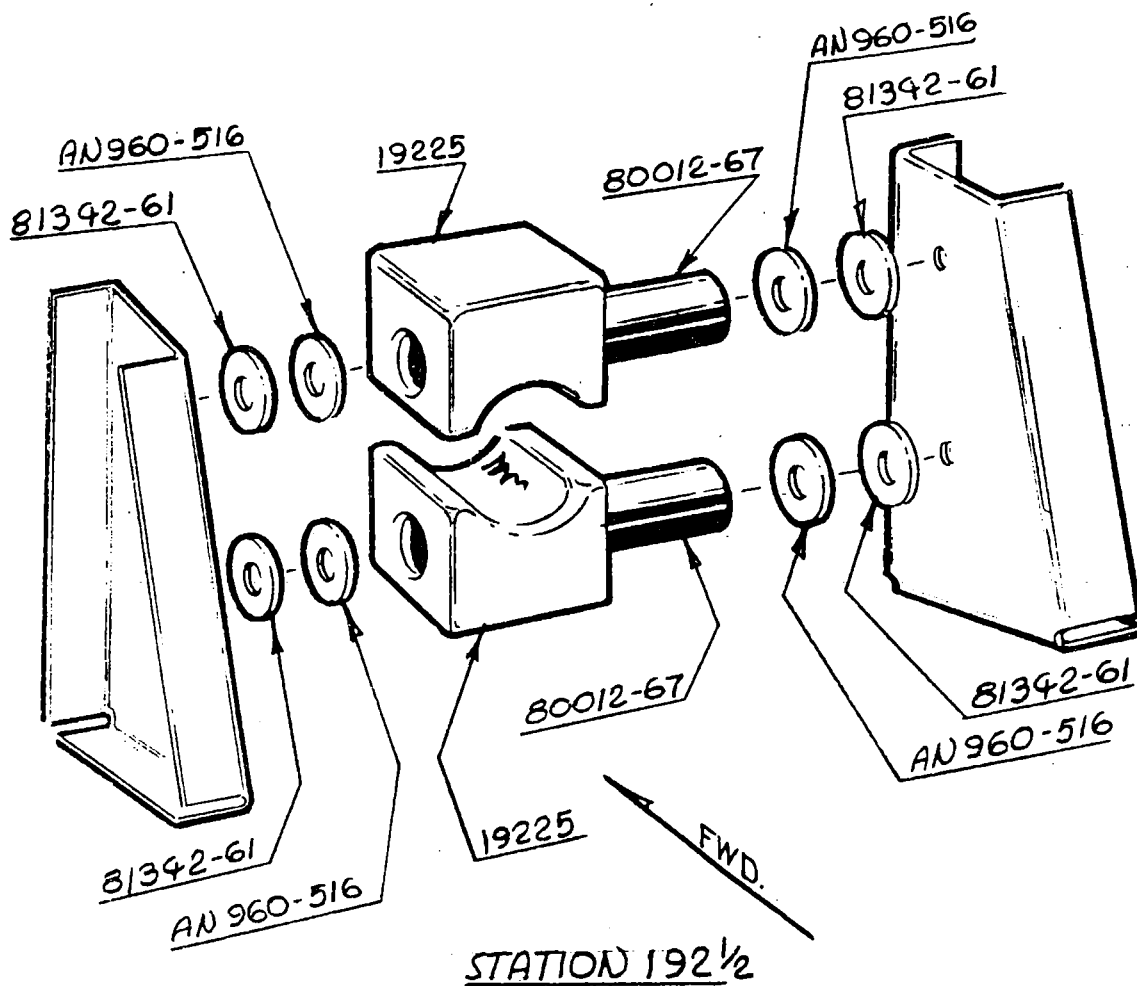
MODELS AFFECTED: PA-23 Apaches - Serials 23-1 to 23-903 inclusive

Service reports from our "Certified Service Centers" indicate that the elevator push-pull tube in the Apache is wearing at a point where it passes through the fiber rollers. This problem has been eliminated in production by the installation of nylon blocks in place of the fiber rollers.

It is requested that four (4) each of block, part number 19225-00, be obtained and installed per Sketch "A" shown on the reverse side of this Bulletin. Compliance with this Bulletin is required at the next 100 hour inspection or by May 1, 1957, whichever shall occur first. Careful examination should be made of the wear area on the elevator push-pull tube and any tube that shows wear exceeding .005 inches should be replaced. The four bearings 80012-67 and the six washers 81342-61 should be removed from the fiber roller installation and reused in the nylon block installation. The AN960-516 washers and the blocks 19225-00 are the new parts required.

Part 19225-00 may be obtained from your nearest Piper distributor or dealer at No Charge. It is estimated that the installation time will require less than thirty minutes and inasmuch as the work will be done at the 100 hour inspection, no warranty labor will be granted.

PIPER AIRCRAFT CORPORATION, LOCK HAVEN, PA.. U. S. A.



ELE. PUSH/PULL TUBE ROLLER	
SKETCH 'A'	S.B. 151
PIPER AIRCRAFT CORP.	
LOCK HAVEN, PA.	